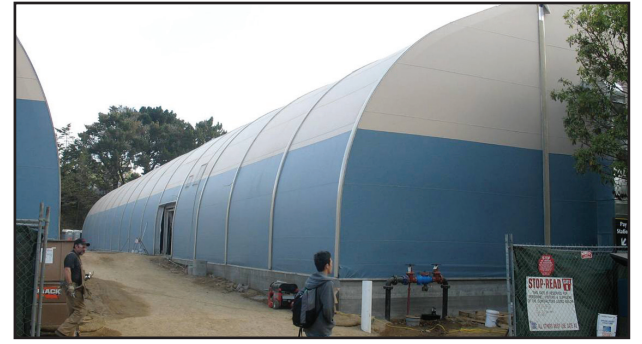




Library project relocations

A major expansion, seismic strengthening, and renovation of the J. Paul Leonard Library is underway. Until its scheduled completion in fall 2011, collections and services are available in the alternate locations listed below.



Library Annex I, opens as a 24-hour space Dec. 1

Library Annex I

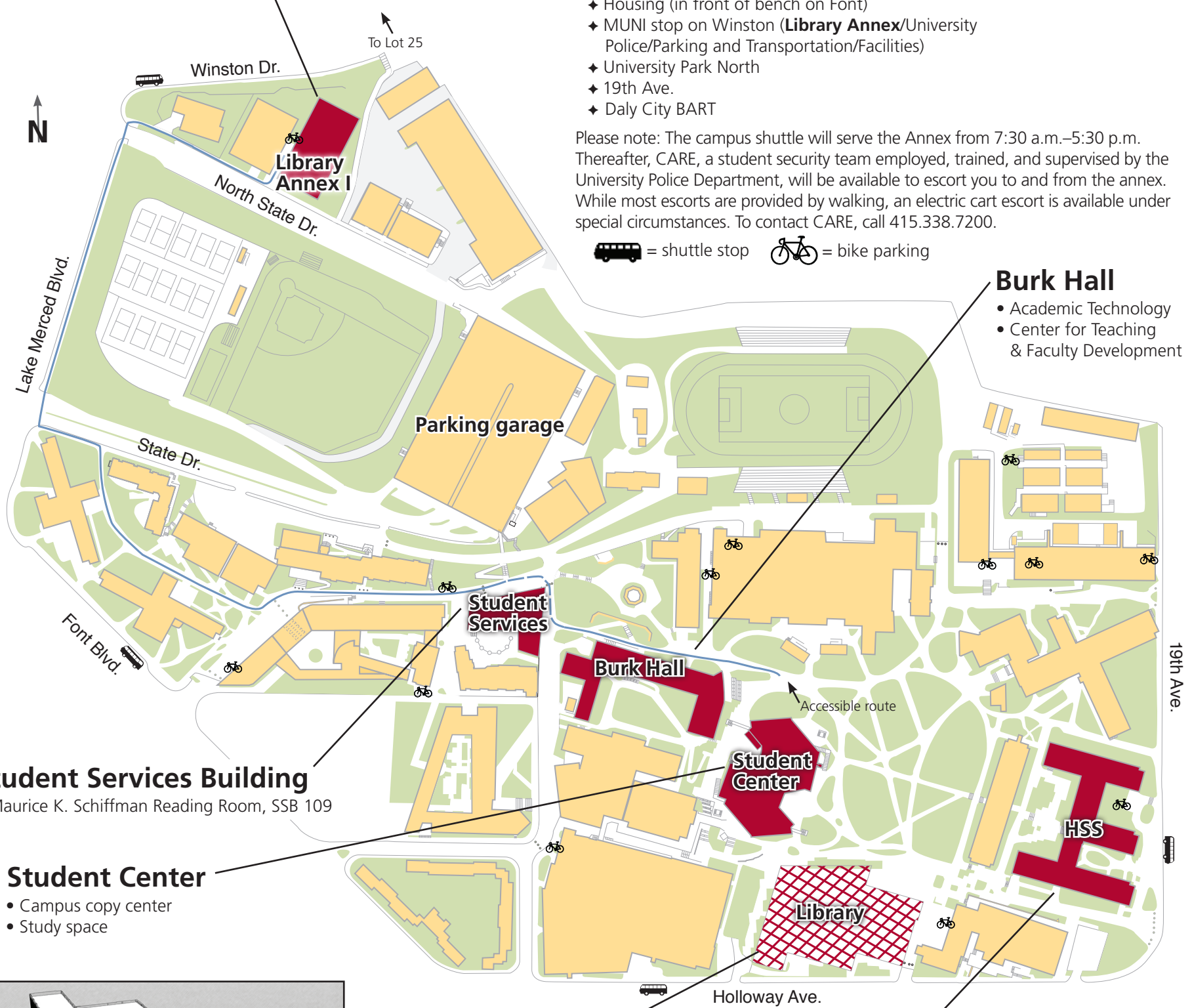
- Information Commons: Computers, printing and copying, video and audio editing stations
- Study space
- Research assistance
- Current periodicals
- Reference books
- Open 24 hours (excluding holidays)

Dedicated campus-loop shuttle

- Hours: Monday–Friday: 7:30 a.m.–5:30 p.m., every 30–35 minutes
- Six stops (listed in order of loop):
 - ◆ Creative Arts (white zone on Holloway)
 - ◆ Housing (in front of bench on Font)
 - ◆ MUNI stop on Winston (**Library Annex**/University Police/Parking and Transportation/Facilities)
 - ◆ University Park North
 - ◆ 19th Ave.
 - ◆ Daly City BART

Please note: The campus shuttle will serve the Annex from 7:30 a.m.–5:30 p.m. Thereafter, CARE, a student security team employed, trained, and supervised by the University Police Department, will be available to escort you to and from the annex. While most escorts are provided by walking, an electric cart escort is available under special circumstances. To contact CARE, call 415.338.7200.

= shuttle stop = bike parking

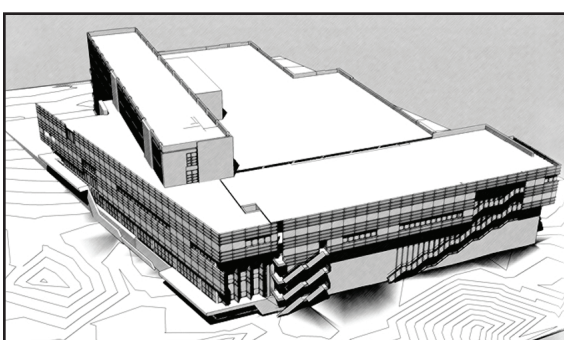


Student Services Building

- Maurice K. Schiffman Reading Room, SSB 109

Student Center

- Campus copy center
- Study space



The J. Paul Leonard Library, 2011

Library

The J. Paul Leonard Library will close Nov. 23, 2008, but library services continue to be offered elsewhere on campus.

HSS

- Check out books requested online, Rm. 101
- Reserve services, Rm. 102
- Media listening/viewing, Rm. 127
- Laptop checkout, Rm. 127
- Research assistance

Burk Hall

- Academic Technology
- Center for Teaching & Faculty Development