

15" & 17" G4 Powerbook Mirroring Instructions (System OS X):

Because these Powerbooks have a non-standard display resolution (1152x768) you will need to change some settings to get it to display properly.

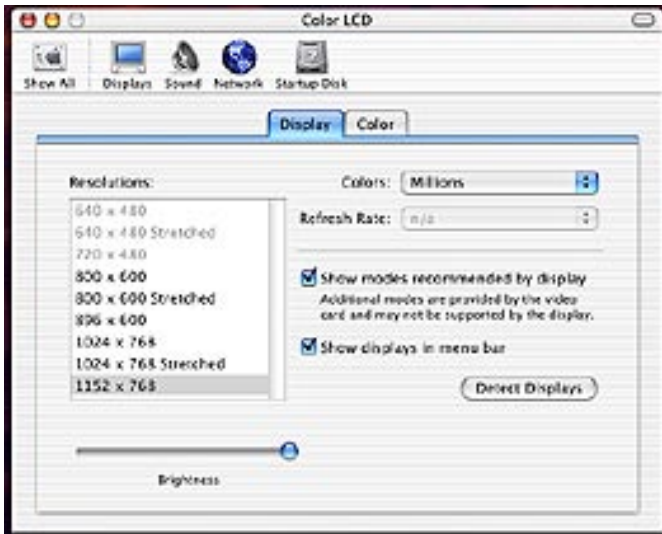
Always set up your laptop in the following order:

Turn on the projector, attach the VGA cable, and turn on the laptop LAST.

After you turn on your laptop, if the image on your laptop screen does not automatically mirror through the projector try the following:

Go to the Dock. Locate and double click on your "System Preferences."

Double click on "Displays" Preferences.

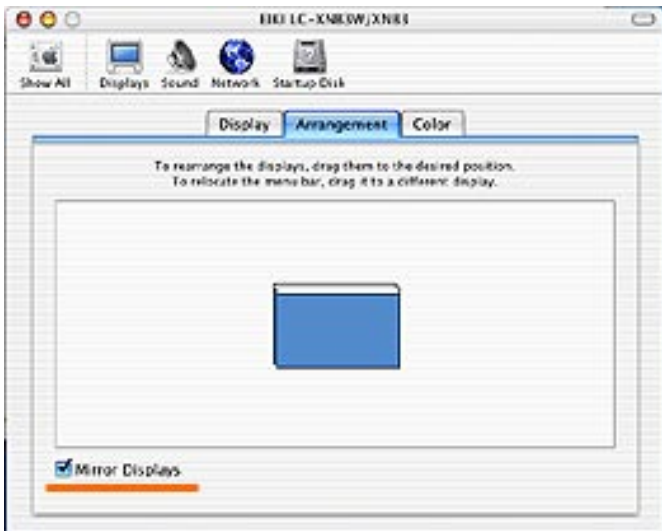


One window will be on your laptop screen and will look like the one shown at the left.

(note the words "Color LCD" at the top of the window. This window controls the settings for your laptop screen.) Do not make any changes to this window.

Using the trackpad or mouse, move your pointer to the right side of your laptop screen.

Now, look at the projected image and keep moving the mouse until you see the pointer on the projected image.



The second window will be on the projector screen. (note the words at the top of the window will be the name of the projector. This window controls the settings for the projected image.)

Move the pointer to this window. There will be a tab labeled "Arrangement." Click on it. There will be a check box at the bottom of the "Arrangement" window labeled "Mirror Displays."

Make sure that box is checked.

Both images will flicker and jump for a second as the laptop and the projector re-synchronize.

If you are using a 17" Powerbook, set the display (projector) resolution to 1280x960. If you are using a 15" Powerbook, set the display (projector) resolution to 1024x768.

The screen on your laptop will probably resize itself so there will be black bars on either side of the screen. This is normal. It will go away when you disconnect from the projector and restart your laptop.

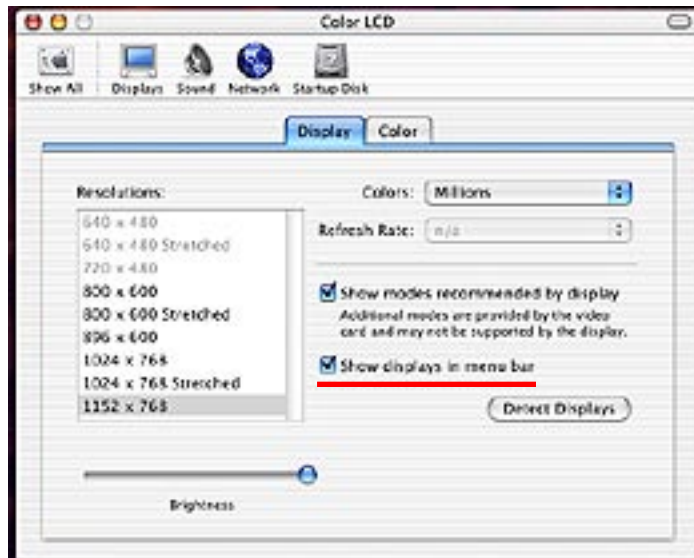
The computer should remember these settings and you should not need to reset them each time. If you have questions, call Laurie at ext. 81492 for assistance.

To easily access your Displays preferences:

System preferences (Available in the Dock)

Then click "Displays."

"Display" Tab: Click "Show displays in menu bar". See below:



A Monitor icon will appear in the menu bar.

You can then access your Displays preferences quickly when you click, hold and select: Open Displays...

